

# Clinical Nurse Specialists and the Multi-disciplinary Team

## Upper Gastro-Intestinal Clinical Nurse Specialists

A clinical nurse specialist in upper gastro-intestinal (GI) cancer is a trained registered nurse who has undertaken extra specialist training and education in the care of upper GI cancer patients.

The upper GI cancer nurse specialist can also be known as your **Key Worker**.

### The Role of the Upper GI Clinical Nurse Specialist (CNS)

The Upper GI CNS provides support to people and their families who are having investigations for or who are diagnosed with any Upper GI cancer. This includes Oesophageal Cancer (gullet), Stomach Cancer, Pancreas Cancer, Cholangiocarcinoma (Bile duct cancer), Gallbladder Cancer and Primary Liver Cancer.

The Upper GI CNS also supports some patients that may have pre-malignant conditions. This means that they do not have a cancer currently but require treatment to try and prevent a cancer developing.

This support is achieved by being present from initial diagnosis and maintaining support throughout treatment and supporting patients living with and beyond cancer. The Upper GI CNS will support patients and their family's through the provision of information, and acting as the patients advocate throughout investigations and treatment planning including surgery, chemotherapy, radiotherapy or other treatment options that maybe appropriate for your type of cancer. The Upper GI CNS can also signpost to other services if required.

In addition, the Upper GI CNS 's are involved in education and the provision of information on upper GI care issues for many disciplines.

You can contact your Upper GI CNS whatever your problem or worry maybe.

Your nurse specialist will be :-

---

**The contact number for your Upper GI CNS is 01484 355064  
Monday - Friday 09.00 - 16.00**

If you cannot locate your nurse – there are 3 nurses in our trust and any of them can give you advice and can be contacted on the same above number or via the main hospital switchboards -

Calderdale Royal Hospital 01422 357171

Huddersfield Royal Infirmary 01484 342000

If you cannot contact your nurse you can speak to another upper GI CNS, any one of them can give advice.

Please be aware that if the nurses are out of the office an answer machine will be in operation. Please leave your name, phone number and brief message and the nurses or a representative will return your call. A cancer care coordinator also works within the team and it maybe that they answer the phone or contact you on the nurse's behalf.

### Who can refer?

- General practitioners
- Self referrals
- Consultants
- Hospices
- Other Trusts
- Out patient department staff
- Other professionals
- Families/carers
- Statutory voluntary services
- Private sector

### People who are involved in your care

Every specialty needs a team of experts to offer the best treatment available. This is called a Multidisciplinary Team (MDT). The team is made up of people who are experts in cancer in different ways. There are people who can understand what cancer cells look like and how they behave and other experts who know how drug combinations work to get the best effect for the individual.

### The role of the MDT

The MDT brings together staff with the necessary knowledge, skills and experience to ensure high quality diagnosis, treatment and care.

The MDT meets once a week. For Upper GI cancers, the MDT meeting is held on a Wednesday. For HPB (Hepato-Pancreatico-Biliary) cancers the MDT meeting is held on a Thursday and for liver cancers the MDT meeting is held on a Friday.

The MDT meets initially to diagnose your condition. They may also meet again to formulate an individual treatment plan for you.

**There are many people in the MDT team looking after you, these include:-**

## **Members of the MDT**

### **Consultant Gastroenterologist**

This is a doctor who has had extensive training in the diagnosis and treatment of conditions that affect the Gastrointestinal tract. Sometimes patients may need procedures such as oesophageal stents or biliary stents which are carried out by a gastroenterologist.

### **Specialist Surgeon**

This is a doctor who is specially trained to perform surgery for patients with cancer. Depending where your cancer is this could be a Specialist Upper GI Surgeon, a Specialist Pancreatic Surgeon, or a Specialist Hepatobiliary Surgeon.

### **Radiologist**

This is a doctor who is an expert in x rays and scans.

### **Pathologist**

This doctor is an expert in looking at cancer cells under the microscope.

### **Medical Oncologist**

These doctors are experts in drug treatments. This includes drugs known as chemotherapy. Your medical oncologist will decide which drugs will be most effective for your type of cancer and help with the treatment planning.

### **Clinical Oncologist**

These doctors are experts in giving specific x-ray treatment known as Radiotherapy.

### **Upper GI Clinical Nurse Specialist**

Nurses with specialist training, knowledge and experience of caring for patients with upper GI cancers

### **Specialist Dietitian**

A dietitian with specialist training, knowledge and experience of providing nutritional support to patients with upper GI cancers

### **Palliative Care Specialists**

These are specialist doctors and nurses who have specialist knowledge and skills in controlling cancer symptoms. They work together with your Upper GI CNS, they can also help with social and psychological wellbeing.

## Where will my care take place?

Some of your investigations will take place at your local hospital Calderdale or Huddersfield, however it may be necessary for you to visit other hospitals for investigations. This may include Bradford Royal Infirmary or St James Hospital Leeds. Your CNS will inform you if this is required and provide you with all the necessary details.

- If you require drug treatment such as chemotherapy as part of your treatment this will be done at your local hospital where possible.
- If you require surgery as part of your treatment this will take place at either Bradford Royal Infirmary for Upper GI patients, or St James Hospital Leeds for pancreas and hepatobiliary patients.
- If you require radiotherapy as part of your treatment this will take place at St James Hospital Leeds.
- If traveling to other hospitals is an issue for you please discuss this with your CNS as they may be able to help.

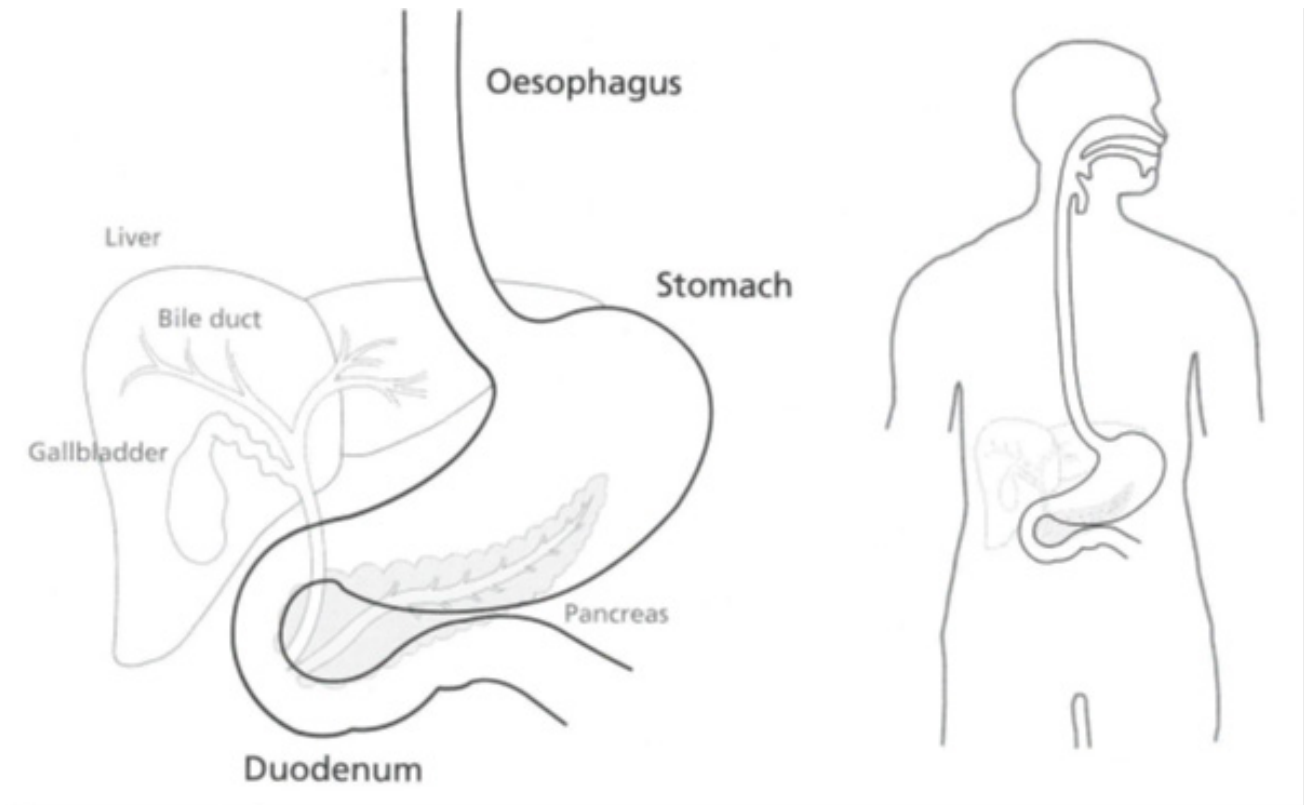
## Other specialists

Depending on your treatment plan, you may meet other professionals and specialists throughout your care. These can include chemotherapy nurses, radiographers, benefits advisers, counselling services, social workers, physio's, and other members of the wider team. If you feel you need any other services or support than you currently have please discuss this with your CNS.

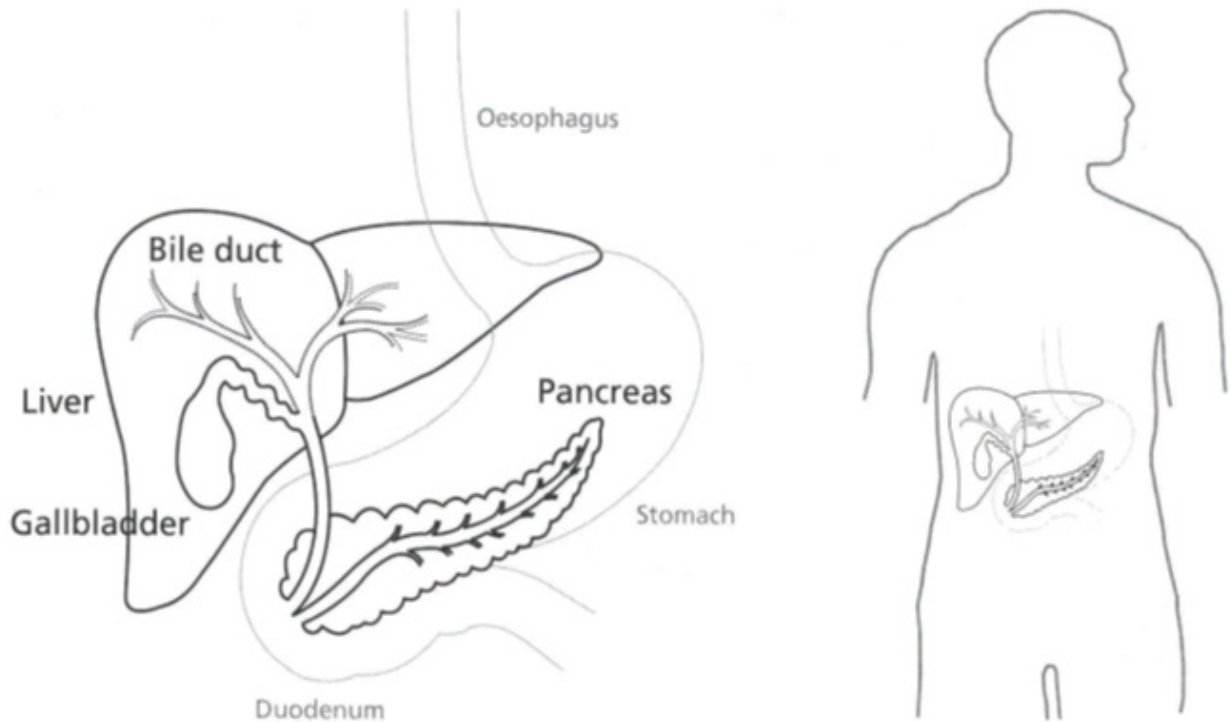
**If you have any questions or do not understand anything you have heard or been told, please contact either your named Upper GI CNS or one of the others in our team.**

On the diagrams below your doctor/nurse can show you where your cancer is if you wish.

**Oesophageal/Gastric:-**



**HPB:-**



## Calderdale and Huddersfield Upper GI Team Contact Numbers

Wendy Markey	Lead Upper GI CNS	01484 355064	mobile 07770645035
Nicola Neale	Upper GI CNS	01484 355064	mobile 07770645035
Rebecca MacMillan	Upper GI CNS	01484 355064	mobile 07770645035
Memuna Younis	Upper GI CNS	01484 355064	mobile 07770645035
Leanne Schofield	Upper GI Admin Lead	01484 355064	
Nahedia Ahmed	Cancer Care Co-ordinator	01484 355980	
Abbey Whiteley	Cancer Navigator		mobile 07586283228
Kate Darwin	Specialist Dietitian	01484 355064	mobile 07717274793

## Macmillan Information Centre

When you are affected by cancer, having the right kind of information at the right time is essential.

### If you have concerns about:

- Finances
- Need emotional support
- Feel that family members need support
- Or have any practical issues at home

The Jayne Garforth Cancer Information Centre in the Macmillan unit at Calderdale Royal Hospital and The Cancer Information Resource Room within the Greenlea Unit at Huddersfield Royal infirmary provide a confidential, drop-in service for anyone affected by cancer.

We also offer referrals to other support services, signposting to self help and support groups and links within your local Community.

### For more information please contact:

Macmillan Unit Calderdale Royal Infirmary	01422 222709
Greenlea Unit Huddersfield Royal Infirmary	01484 343614

### Other useful addresses:

Oesophageal Patients Association  
01217049860  
[www.opa.org.uk](http://www.opa.org.uk)

Macmillan Cancer Support  
Freephone 08088080000  
[www.macmillan.org.uk](http://www.macmillan.org.uk)

Pancreatic Cancer UK  
Freephone 08088010707  
[www.pancreaticcancer.org.uk](http://www.pancreaticcancer.org.uk)

If you have any comments about this leaflet or the service you have received you can contact :

The Upper GI Team  
Huddersfield Royal Infirmary

Telephone No: 01484 355064

[www.cht.nhs.uk](http://www.cht.nhs.uk)

If you would like this information in another format or language contact the above.

Potřebujete-li tyto informace v jiném formátu nebo jazyce, obraťte se prosím na výše uvedené oddělení

Jeżeli są Państwo zainteresowani otrzymaniem tych informacji w innym formacie lub wersji językowej, prosimy skontaktować się z nami, korzystając z ww. danych kontaktowych

ਬ ਤੁਸੀਂ ਇਹ ਜਾਣਕਾਰੀ ਕਿਸੇ ਹੋਰ ਪ੍ਰਾਚੂਪ ਜਾਂ ਭਾਸ਼ਾ ਵਿੱਚ ਲੈਣਾ ਚਾਹੁੰਦੇ ਹੋ,  
ਤਾਂ ਕਿਰਪਾ ਕਰਕੇ ਉਪਰੋਕਤ ਵਿਭਾਗ ਵਿੱਚ ਸਾਡੇ ਨਾਲ ਸੰਪਰਕ ਕਰੋ।

اگر آپ کو ہی معلومات کسری اور فارمٹ ٹی زبان می درکار ہوں، تو  
برائے مہربانی مندرجہ بالا شعبے می ہم سے رابطہ کریں۔

"إذا احتجت الحصول على هذه المعلومة بشكل مغاير أو مترجمة إلى لغة مختلفة فيرجى منك الاتصال بالقسم  
المذكور أعلاه"